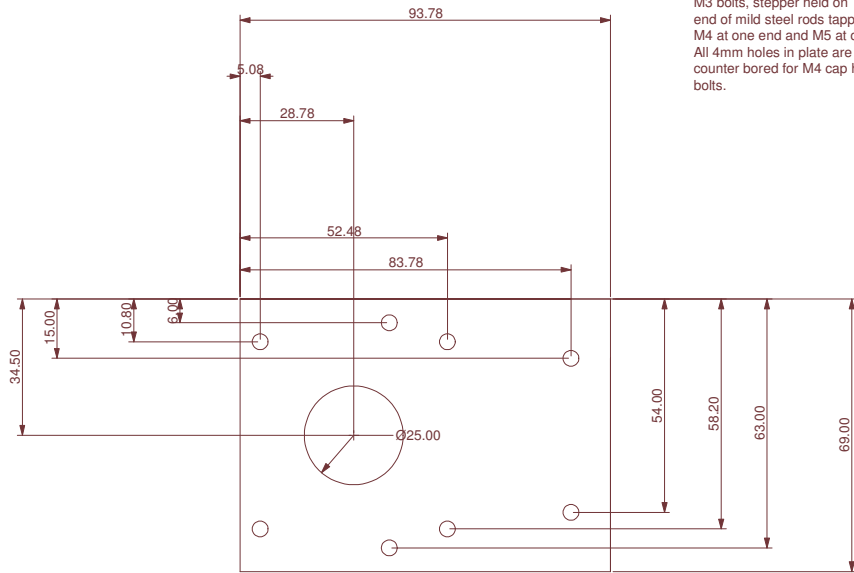
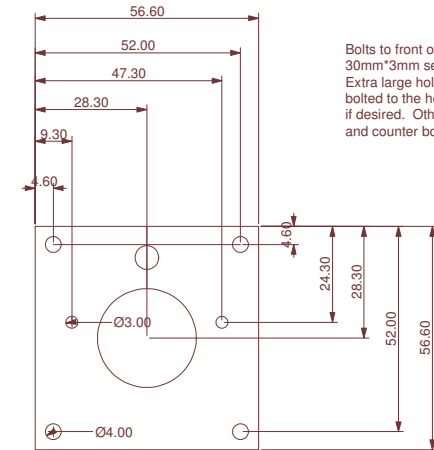


Z



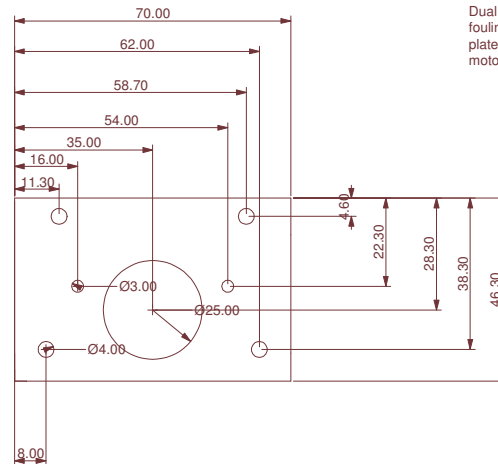
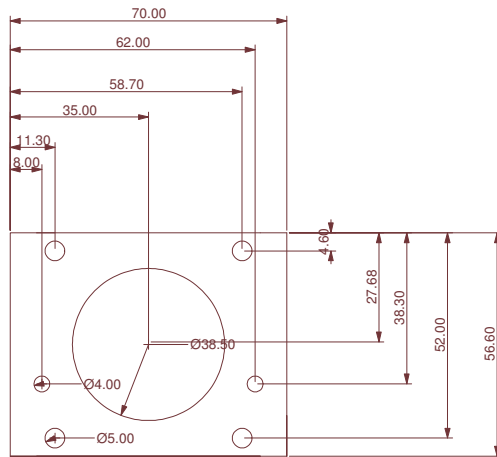
Bolts to top of mill with long M3 bolts, stepper held on end of mild steel rods tapped M4 at one end and M5 at other. All 4mm holes in plate are counter bored for M4 cap head bolts.

Y (back/forward), drawing upside down

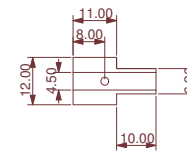


Bolts to front of mill, held by two 30mm\*3mm self tapping/wood screws (B&Q). Extra large hole is to allow it to be bolted to the heavy base of the mill if desired. Other holes drilled 4mm and counter bored.

Y (left/Right) small plate mounted to mill, larger to stepper



Dual plate design stops the plate fouling on the mill base. Smaller plate attached to mill, larger to motor.



Made from Brass and held by a rolled pin. This is made shorter than original handel piece and requires a small amount of the lead screw to be trimmed off onc installed, this was to allow for a shorter distance between ways and stepper motors. 6.36mm is 1/4" to match my flexible couplers (RS).